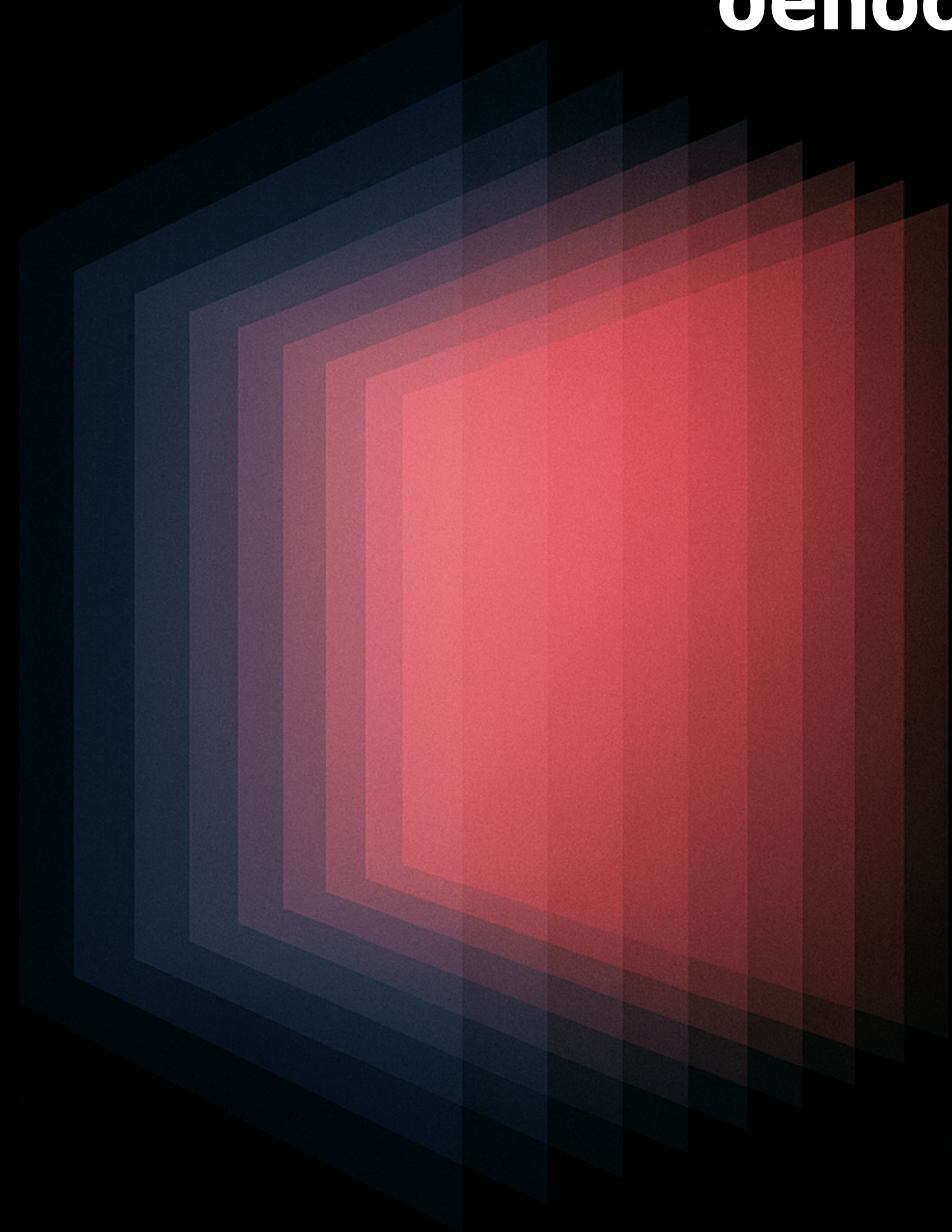


EBOOK



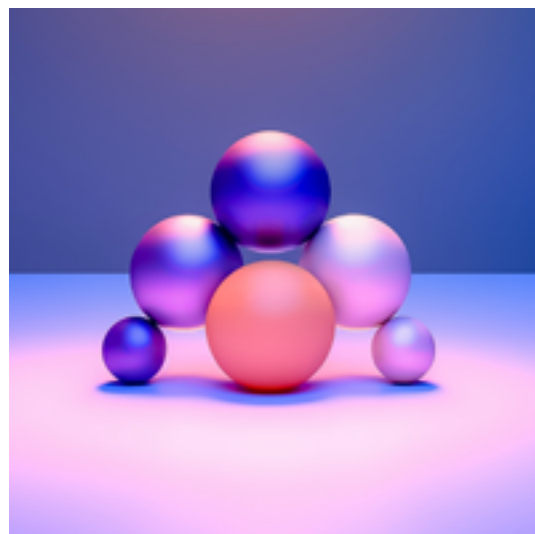
AI-Ready Data for GenAI Success

How to (Easily) Provide the Right
Foundation for AI-Ready Data

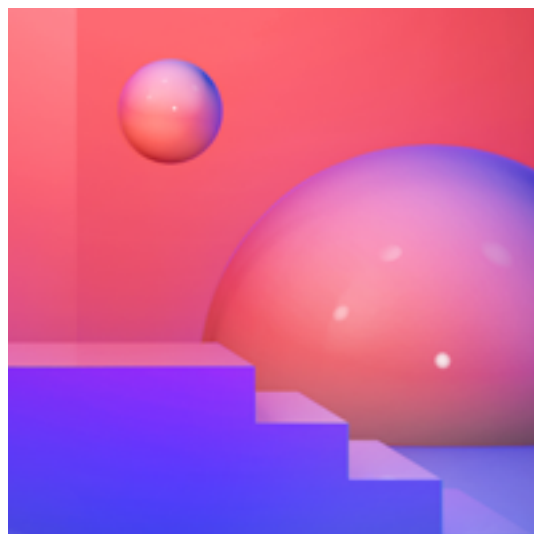




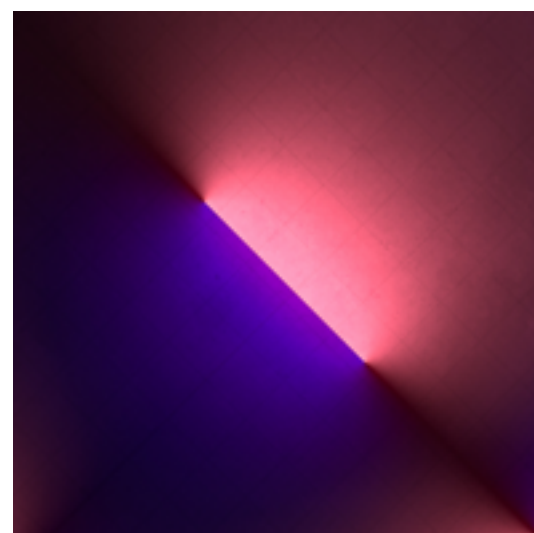
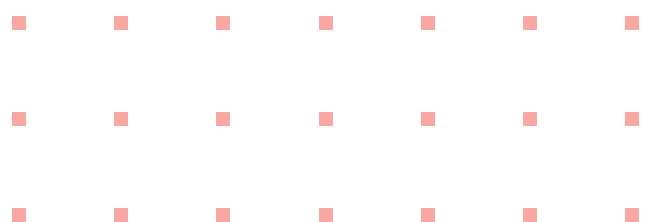
CHAPTER 1:
Generative AI
Today



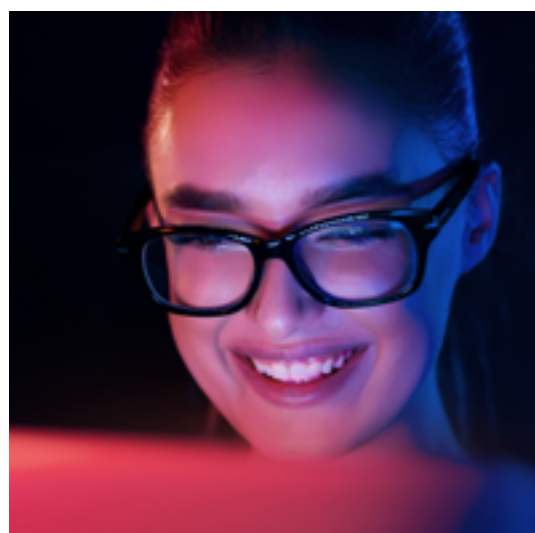
CHAPTER 2:
Data is the
Differentiator



CHAPTER 3:
The Ongoing Need
for “AI-Ready” Data

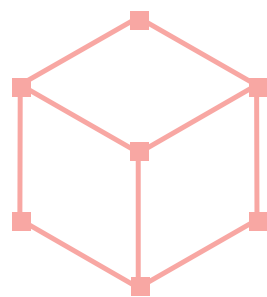


CHAPTER 4
Logical Data
Management and
the Denodo Platform



CHAPTER 5:
Case Studies

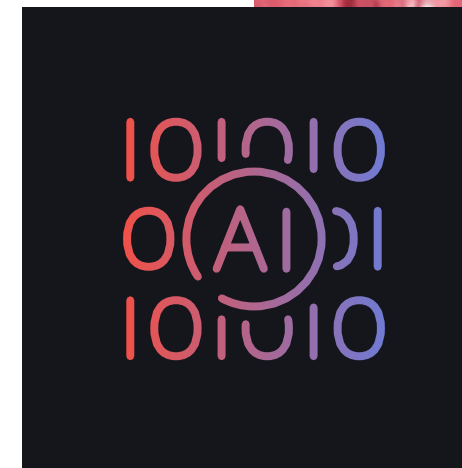
LEARN MORE ABOUT
THE DENODO PLATFORM



CHAPTER 1

GENERATIVE AI TODAY

Starting in 2025, organizations began to move from generative AI (GenAI) *experimentation* to GenAI *value-realization*. Organizations are leveraging GenAI to reduce costs, accelerate processes, and gain access to new revenue streams.



Already, across all industries, GenAI is enhancing many areas of the business:

EXPERIENCES

It's streamlining both customer and employee experiences through innovative new applications like chatbots and virtual assistants.

PRODUCTIVITY

It's improving employee and customer productivity through automated summarization, code generation, and conversational search.

INSIGHT

It's enabling analysts to more easily extract valuable insights from large datasets for better decisions.

BUSINESS PROCESSES

It's optimizing processes with capabilities like intelligent document processing, data augmentation, and automated fraud detection.

CREATIVITY

It's creating new content, ideas, stories, images, videos, and music.

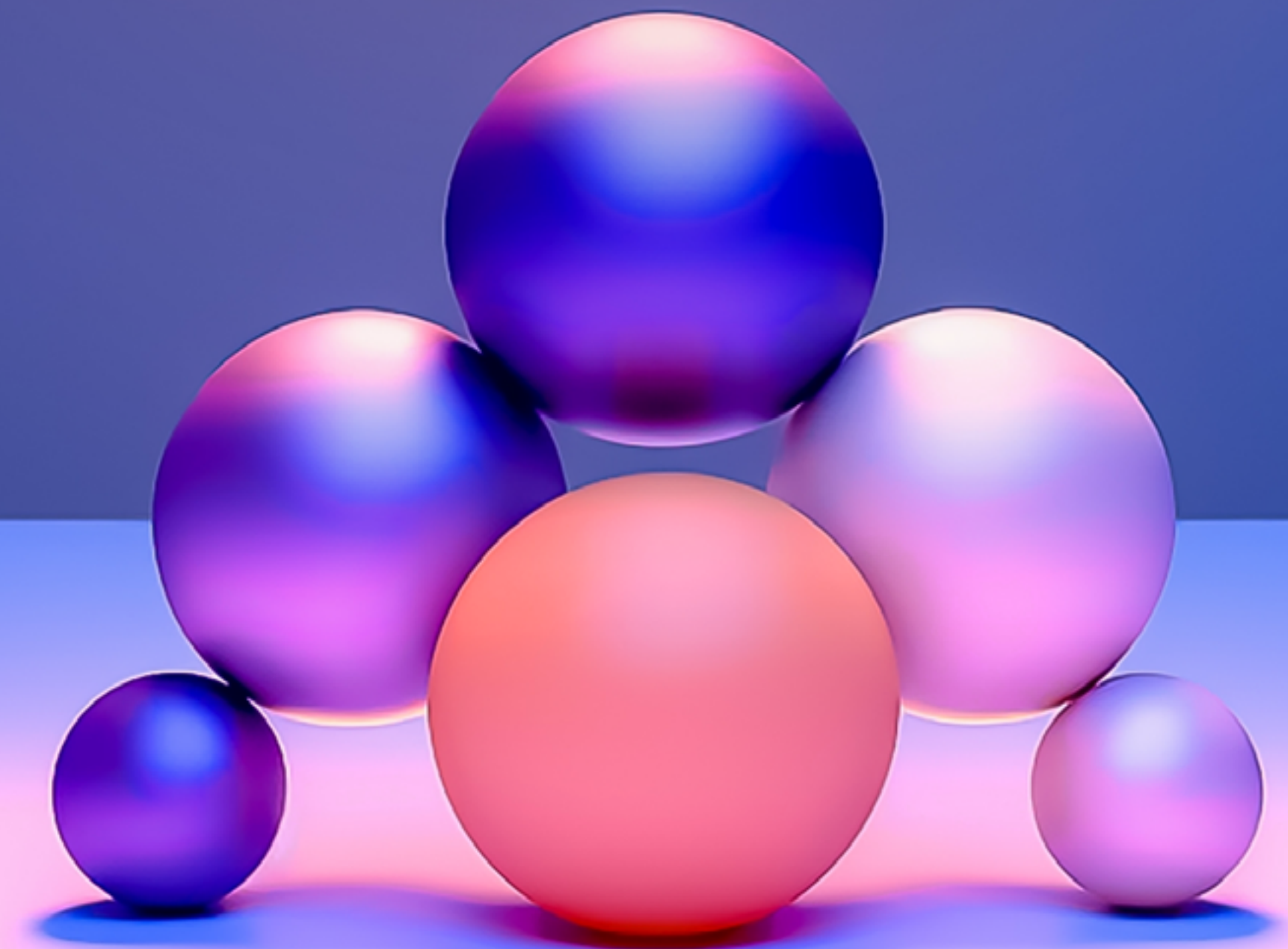
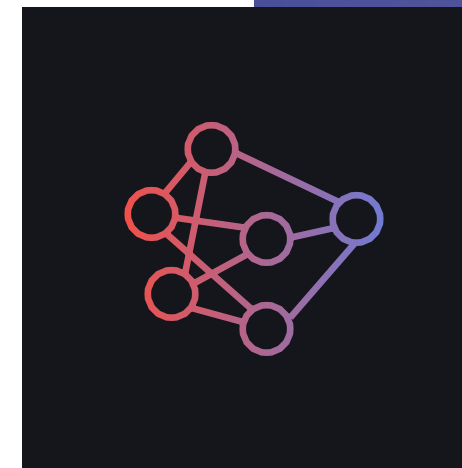
Source: Vishal Srivastava, senior generative AI solutions architect at Amazon Web Services (AWS), presenting at the Denodo webinar series, **“Enabling GenAI Success with Trusted, AI-Ready Data.”**

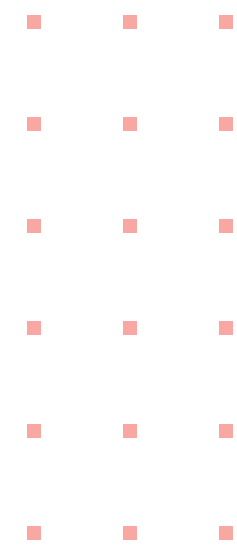
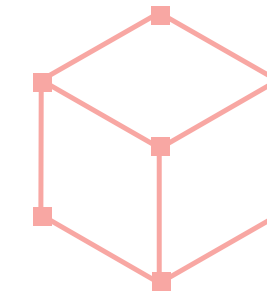


CHAPTER 2

DATA IS THE DIFFERENTIATOR

With all of the recent success, organizations also learned a hard truth: Business-specific GenAI applications are only as reliable as the data that feeds them. Bad or missing data results in hallucinations, whereas trusted, complete data results in accurate, reliable responses.





This means that for organizations launching a GenAI application, data is both a **foundation** and a **differentiator**.

When developing a GenAI application, many organizations put a lot of thought into which large language model (LLM) to use, but the LLM is just the tip of the iceberg, the bulk of which is company data. More than any other element, the quality of your company’s data determines your success or failure with GenAI

Source: Vishal Srivastava, senior generative AI solutions architect at Amazon Web Services (AWS), presenting at the Denodo webinar series, **“Enabling GenAI Success with Trusted, AI-Ready Data.”**

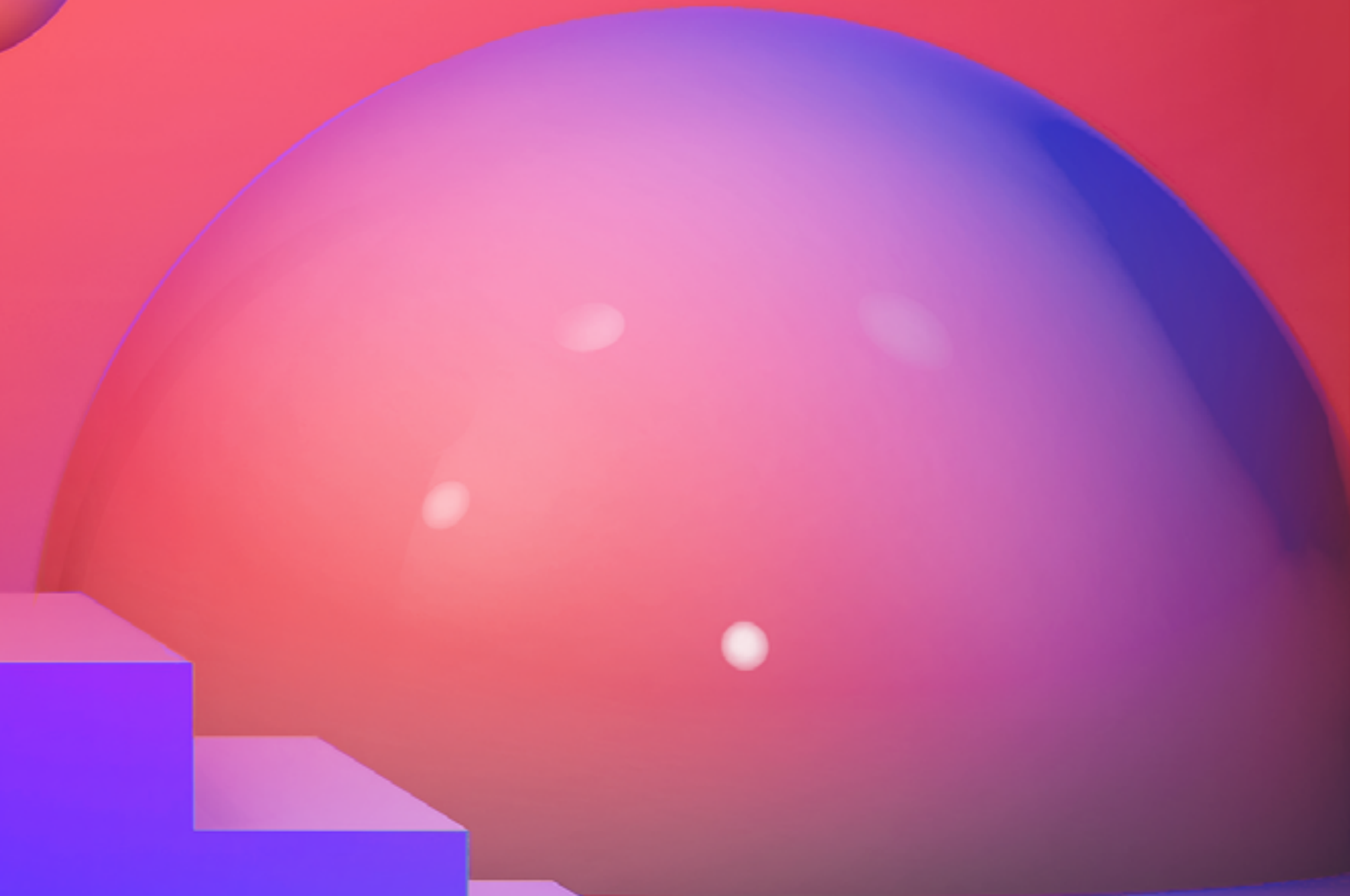
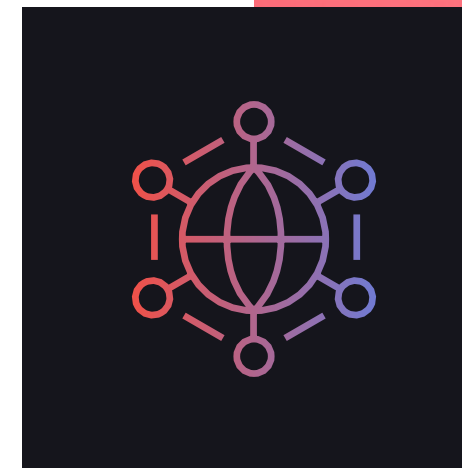


CHAPTER 3

THE NEED FOR “AI-READY” DATA

As organizations deploy GenAI applications, they need to be able to provide these applications with immediate access to trusted, governed, properly formatted data from across the organization.

In short, organizations need **“AI-ready” data**.

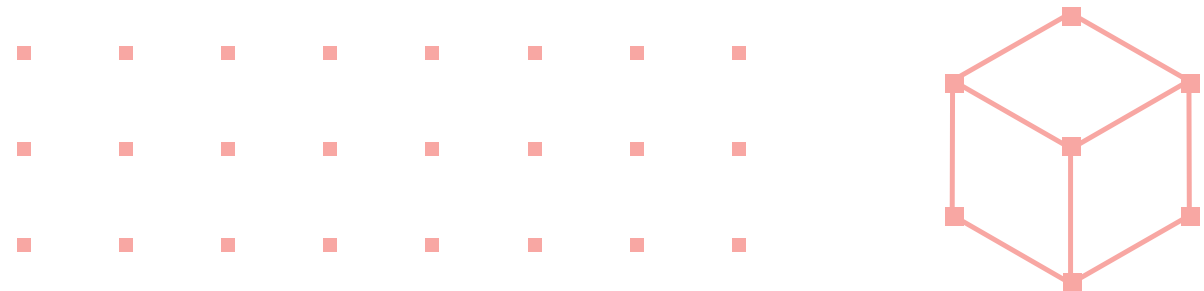




Many organizations are leveraging data lakehouses, cloud data warehouses, and other data platforms to store all of the necessary data from across the organization.

However, the challenge remains: getting data **out** of these platforms (and other, supporting data sources) and **into** a GenAI application, in a usable format, and when the data is needed, to support active prompts.

Retrieval augmented generation (RAG) is a framework that directs GenAI applications to leverage specific data sets to answer certain prompts. However, for RAG to work effectively, organizations still need to provide the RAG-enabled application with the right, AI-ready data. If the RAG framework directs an application to a data source that is offline or unavailable, that data is not AI-ready, so the application will be unable to answer the prompt.



CHAPTER 4

LOGICAL DATA MANAGEMENT AND THE DENODO PLATFORM

Logical data management solutions solve the challenge of supplying GenAI applications with AI-ready-data. “Logical” means that they are not tied to the restrictions of any one system or reporting tool.



The Denodo Platform is the leading solution for logical data management. Regardless of how and where the source data is stored, the Denodo Platform delivers AI-ready data to GenAI applications, in real time.



THE DENODO PLATFORM PROVIDES:



Real-time access to disparate data across data lakehouses and other supporting data sources



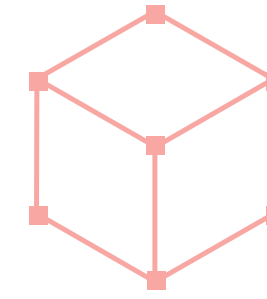
Universal semantics, automatically transforming data into language that can be unambiguously grasped by large language models (LLMs)



Enterprise-wide data governance for “guard rails” and data security for protection, risk mitigation, and compliance



Rich metadata providing the AI application with important context about each data source and how it can and should be used

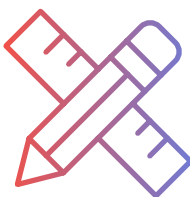


Ever since the release of Denodo Platform 9.1 in November of 2024, the Denodo Platform has also provided:

DENODO ASSISTANT:

Automating key data engineering tasks and delivering contextualized insights and intelligent recommendations to data analysts and other business users

With Denodo Platform 9.2, released in April of 2025, Denodo also added:



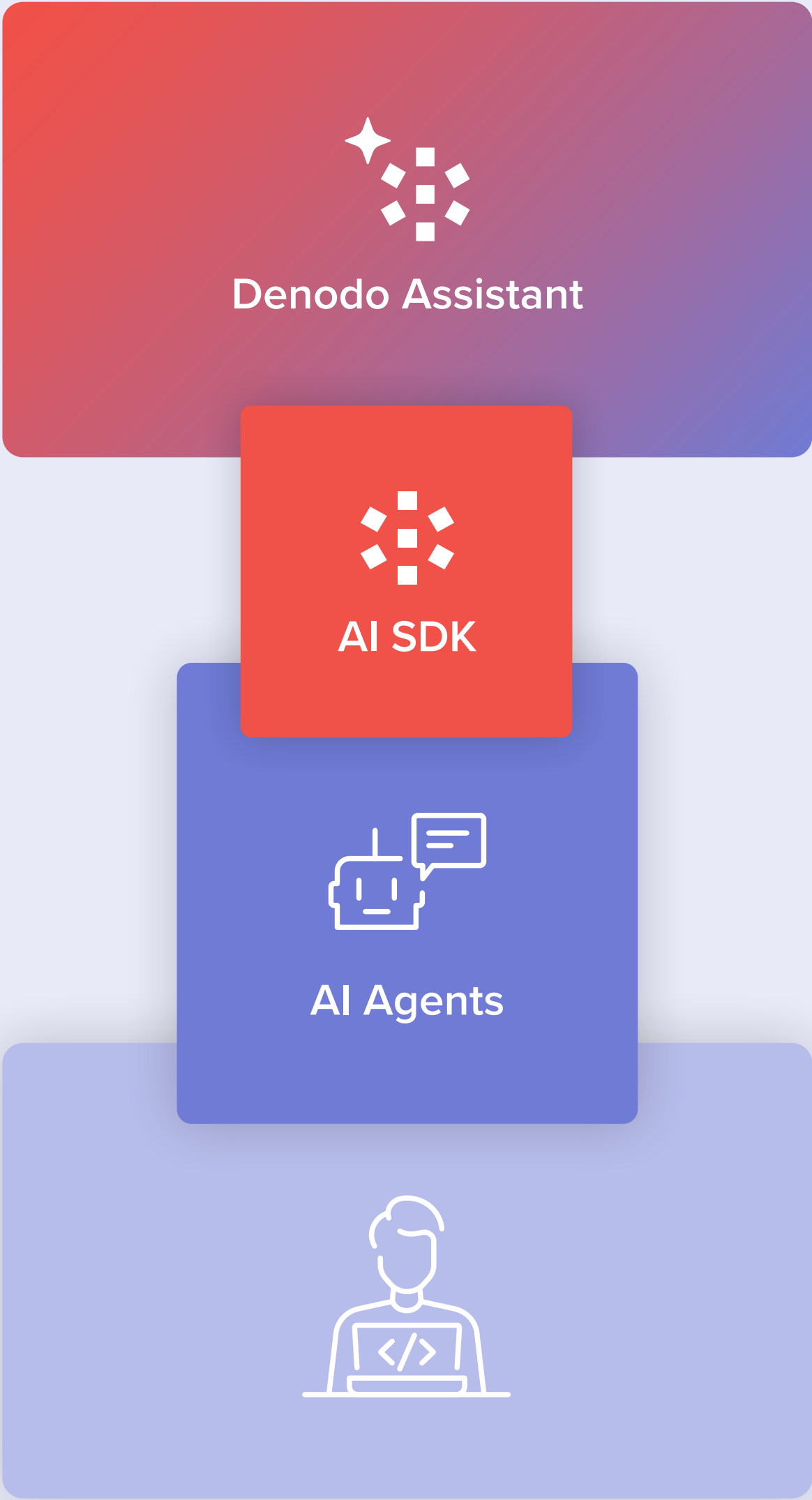
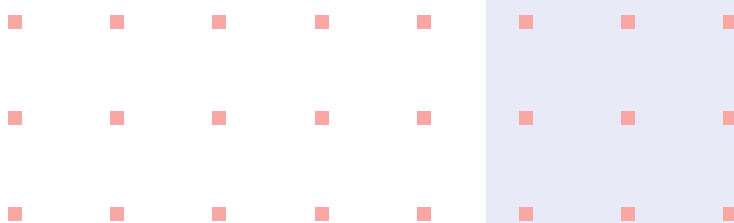
The ability to dynamically customize AI models with user-specific knowledge, streamlining the process of improving model performance with additional data

THE DENODO AI SDK:

Accelerating the development of AI-powered applications and agents



Enhanced support for unstructured data, to more effectively extract sentiment from social media posts or analyze images



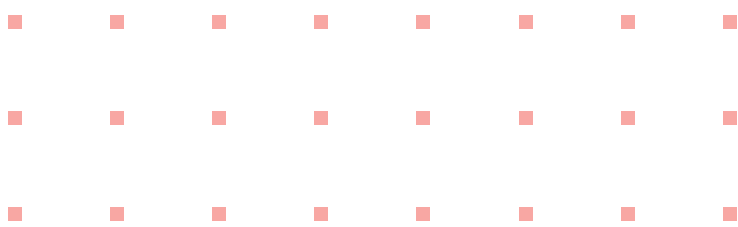
CHAPTER 5

CASE STUDIES





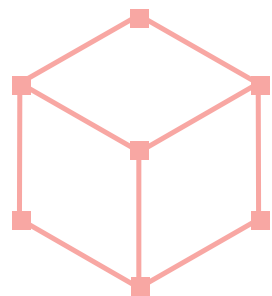
FESTO



Festo, a leading provider of factory automation and process automation solutions, wanted to build a GenAI-powered chatbot but found it challenging to implement a system to prepare the available data for the application. In addition, the chatbot was suffering from hallucinations and inaccuracy. Finally, Festo needed more effective access controls, so that only authorized users could retrieve sensitive information from the chatbot.

Festo implemented the Denodo Platform to deliver its chatbot AI-ready data, drawn from across the organization. By implementing the Denodo Platform and the Denodo AI SDK, Festo gained:

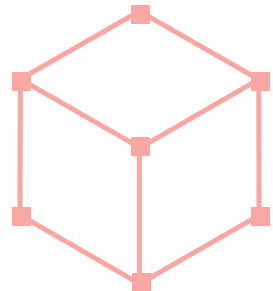
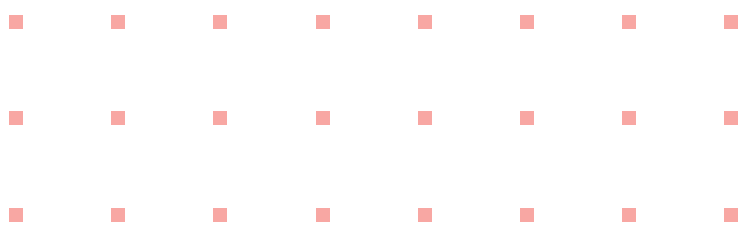
- Accelerated GenAI use case development
- Simplified and governed data access
- Improved semantic accuracy for more reliable, AI-driven insights





Alexforbes, a diversified financial services company founded in 1935, wanted to develop a GenAI-powered data solution that could centralize data, streamline processes, and support advanced analytics. However, fragmented data sources, usability challenges, and integration bottlenecks hindered progress.

The Denodo Platform unified, simplified, and accelerated access to data for Alexforbes, and the Denodo AI SDK streamlined the development of AI-driven query processing, in natural language, across a variety of financial and operational data sources, unlocking new levels of efficiency.





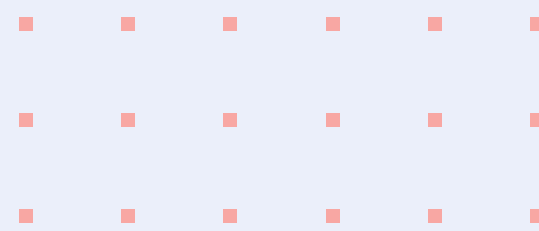
LEARN MORE ABOUT AI-READY DATA

For a deeper dive, including insights from AWS, a Denodo partner; TDWI; and Denodo customers Festo, Alexforbes, and Perkins Coie, view one or more of the sessions in our on-demand webinar series, “**Enabling GenAI Success with Trusted, AI-Ready Data**”:

Maximizing GenAI Potential with Contextual, Real-Time Data from Your Enterprise. With Fern Halper, Ph.D., vice president and senior director of TDWI Research for Advanced Analytics.

Bringing the Power of Generative AI to the Denodo Platform with AWS. With Vishal Srivastava, senior partner solutions architect – GenAI specialist, AWS.

Accelerating AI Adoption: Case Studies with the Denodo AI SDK. With Barend (Benny) van Coller, data analyst and Data Governance Team lead, Alexforbes; Lukas Reinauer, specialist, Big Data & AI, Festo; and Jim Naufel, data virtualization architect, Perkins Coie.



Learn More about the Denodo Platform

Read the full case studies for **Festo** and **Alexforbes**, to learn additional details about each implementation. Also, be sure to visit **denodo.com** to access hundreds of other case studies and learn more about **logical data management**, the **Denodo Platform**, our **AI capabilities**, **Denodo Assistant**, or the **Denodo AI SDK**.

CONTACT US

